

# CAROLINAS CONTACTS

*CRSMCA - Covering the Carolinas for over 75 years*

## COMING IN 2023...

## CAROLINAS MID-WINTER ROOFING EXPO



### **SEPT - DEC 2022 ISSUE**

5th Annual Golf Tournament Photos / 9  
Details & Registration  
Carolinas Mid-Winter Roofing Expo / 11  
Winter Weather Preparation / 22



# THANK YOU TO ALL SPONSORS

## TITLE SPONSOR

# AlumaKlad ColorKlad™

### PLATINUM



### GOLF HOLES



AssuredPartners



Beacon Roofing Supply



### SUPPORTING SPONSORS

DOUGLAS K. GENTILE,  
CRSMCA CPA



First Citizens  
WEALTH MANAGEMENT



METAL ROOFING  
Systems, Inc



SOPREMA



VERSICO  
ROOFING SYSTEMS



*Support the companies that support your association!*

# TABLE OF CONTENTS

September - December 2022

04

Message from  
CRSMCA Executive  
Director, Carla Sims

09

5th Annual Golf  
Tournament Photos

11

Details & Registration  
Carolinas Mid-Winter  
Roofing Expo

22

Winter Weather  
Preparation

- 02 5th Annual Golf Tournament Sponsors
- 04 Message from Executive Director
- 05 Training Space at CRSMCA
- 06 News from the Carolinas
- 09 5th Annual Golf Tournament Photos
- 11 Details & Registration  
Carolinas Mid-Winter Roofing Expo
- 19 The Second Round, ICC 2024 Codes
- 20 Know the Facts
- 22 Winter Weather Preparation
- 25 Safety Talks | Charlas de Seguridad

## CRSMCA STAFF MEMBERS

Executive Director, Carla B. Sims  
Assistant, Karin Barahona

## CRSMCA MAGAZINE MEMBERS

Chairman, Henry Sackett, ABC Supply Company, Inc.  
Josh Dernosek, CL Burks Construction  
Brandon Jackson, Petersen Aluminum Corporation  
Rainy Ugenmach, NBHandy Company  
Carla Sims, CRSMCA

*Carolinas Contacts address issues and concerns of the roofing industry. Technology, test, and building codes are constantly changing, and such changes may not be reflected herein. All information is presented for the benefit of our readers and does not necessarily reflect the views of CRSMCA. Press releases and product information presented do not reflect all available materials. Before purchasing, installing, using, or recommending any product, system, or method, readers should make independent evaluations.*

## CAROLINAS ROOFING & SHEET METAL CONTRACTORS ASSOCIATION, INC.

PO BOX 7643  
CHARLOTTE NC, 28241-7643

710 IMPERIAL COURT  
CHARLOTTE, NC 28273

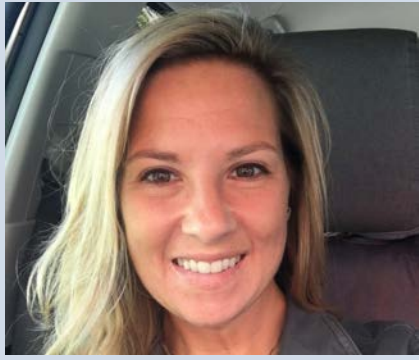
704.556.1228  
[www.crsmdca.org](http://www.crsmdca.org)  
[staff@crsmdca.org](mailto:staff@crsmdca.org)

### THE CRSMCA MISSION STATEMENT

*To promote and safeguard the common business interest of its members and to improve conditions by educating all persons concerning the roofing and sheet metal business and industry. To work for the development and progress of the roofing and sheet metal business industry and to work with individuals' organizations and governmental agencies toward the achievement of a stronger profession of the roofing and sheet metal industry.*

AFFILIATED WITH NATIONAL ROOFING  
CONTRACTORS ASSOCIATION, INC.





**Message from Executive Director,  
Carla B. Sims**

Carolinas. Not only to display your products and/or services, but to also engage in a networking environment in multiple avenues during the event as well as through a demonstration opportunity. As a **contractor, architect, engineer** in the roofing industry, attending this event will allow you to explore over 80 booths of industry related products available in the market place from goods to services. You can also attend education sessions from industry professions that will help your business grow! **BE SURE TO CONTINUE THROUGH THIS ISSE FOR DETAILS AND YOUR REGISTRATION OPPORTUNITY or visit [www.crszca.org](http://www.crszca.org)!**



As the 2022 calendar year comes to a close, the CRSMCA Planning Committee members and Staff are preparing for the **2023 Carolinas Mid-Winter Roofing Expo**. **Are you making your plans to attend?** As a **manufacturer, distributor or independent representative** in the roofing industry, this is a great opportunity to place your business in front of hundreds of commercial and residential roofing companies in the

**2023 SPRING DISTRICT MEETINGS**

DISTRICT 10	MARCH 14	DISTRICT 5	APRIL 4
DISTRICT 9	MARCH 21	DISTRICT 4	APRIL 6
DISTRICT 8	MARCH 23	DISTRICT 3	APRIL 18
DISTRICT 7	MARCH 28	DISTRICT 2	APRIL 20
DISTRICT 6	MARCH 30	DISTRICT 1	APRIL 25

**CRSMCA will be bringing back the SPRING DISTRICT MEETINGS in March 2023!**

CRSMCA will host a min-education session or social gathering at a designated location based in the Carolinas to provide members and friends of CRSMCA a place to learn and network with those within their industry. Let us gather to building our relationships and industry for a better future generations!

**ARE YOU STAYING CONNECTED WITH CRSMCA?**

CRSMCA has followed the method of many other organizations and industries alike that now rely on social media, email and website management for mainstream communication to members and peers. The CRSMCA Staff is working on increasing their **social media** presence (Facebook, Instagram and Twitter).

find us on social media



However, CRSMCA provides weekly e-Newsletters on Tuesday's and utilizes the website ([www.crszca.org](http://www.crszca.org)) to keep members and peers updated. If you are not receiving the e-Newsletters and are interested, please contact me via email at [csims@crsmca.org](mailto:csims@crsmca.org).

*I look forward to speaking with you soon and know that this will be a great opportunity for CRSMCA!*

*-Carla B. Sims, CRSMCA Executive Director*

**CRSMCA EXECUTIVE MEMBERS**

- President, Bert Pickens, Pickens Contracting, Inc.
- 1st Vice President, Jason Tetterton, Curtis Construction Co., Inc.
- 2nd Vice President, Bobbie Jo Deal, CityScape Roofing, Inc.
- Secretary/Treasurer, Robert Hodges, R.K. Hydro-Vac, Inc.
- Past President, Matthew Williams, CityScape Roofing, Inc.

**CRSMCA BOARD OF DIRECTOR MEMBERS**

- 01 Jimmy Hinnant, CityScape Roofing, Inc. [Claremont, NC]
- 02 Casey Morgan, Triad Roofing Co., Inc. [Winston-Salem, NC]
- 03 Mike Degner, Radco Roofing [Mount Holly, NC]
- 04 David Panella, Hamlin Roofing Co., Inc. [Garner, NC]
- 05
- 06 Geoffrey Rempel, Hound Roofing, Inc. [Wilmington, NC]
- 07 Jimbo Spann, Spann Roofing & Sheet Metal [Conway, SC]
- 08 Kristina Zushma, Spann Roofing & Sheet Metal [Conway, SC]
- 09
- 10 Bryan Pribula, CL Burks Construction [Charleston, SC]

## Looking for Training Space in the Charlotte Area?

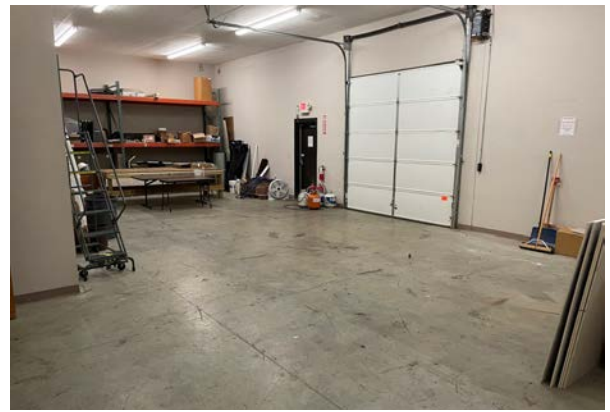
The CRSMCA headquarters features a conference room and a warehouse demonstration area...perfect for your next training event!

The conference room holds up to 40 people classroom style or set less for an employee or board meeting. The conference room hosts a screen for your projection needs and Wi-Fi.

The warehouse demonstration area is perfect for your set up of products and/or mock-up for the training event. The area is ventilated and can provide shelter in rain or cold weather.

Available for you is your CRSMCA support staff; available to accept shipments and assist with promotional exposure.

To reserve your space, contact the CRSMCA office at 704.556.1228 or [cbsims@crsmca.org](mailto:cbsims@crsmca.org).



**80<sup>th</sup> ANNUAL MEETING & SUMMER CONVENTION**  
**June 22-25, 2023**

**Omni Grove Park Inn**  
**Asheville, North Carolina**  
 come and experience an exciting escape with southern hospitality amidst the beauty of the Blue Ridge Mountains of NC

## Metal Roof Clips & Accessories

We manufacture and supply clips and accessories for the following roof systems:

New Tech  
 Englert  
 Ultra Seam  
 Zimmerman  
 Knudson  
 Rollformer  
 Schleich  
 Quadra-Pro™  
 and many more



**LSI GROUP INC.**  
 METAL BUILDING COMPONENTS  
 Logan Stampings - Roof Hugger - BPD

**866-766-3254**

Use our Online CLIP FINDER at [WeGotClips.com](http://WeGotClips.com)



find us on social media



### ASSOCIATE GROUP EXECUTIVE MEMBERS

President, Chris Love, Mule-Hide Products, Inc.  
 1st Vice President, Darren McEvoy, Premier Building Products, Inc.  
 2nd Vice President, Tara Burgei, Johns Manville  
 Secretary/Treasurer, Mark Cameron, Mid-States Asphalt  
 Past President, Sean Dougherty, OMG, Inc.

### ASSOCIATE LIAISON MEMBERS

- 01 David Summers, Beacon Roofing Supply [Advance, NC]
- 02 Steve Hall, Sika-Sarnafil [Winston-Salem, NC]
- 03 Brad Damewood, Beacon Roofing Supply [Charlotte, NC]
- 03 Andy Butler, Roofers Supply of Greenville [Charlotte, NC]
- 04 Justin Maycher, GAF Materials Corporation [Raleigh, NC]
- 05 Chad Bolt, ABC Supply Company, Inc. [Greenville, NC]
- 05 Todd Casey, Beacon Roofing Supply [Goldboro, NC]
- 06 Anna Read Maltos, Superior Distribution [Wilmington, NC]
- 07 Lee Wells, Beacon Roofing Supply [Myrtle Beach, SC]
- 08 Keith Whigham, Premier Building Products, Inc. [Columbia, SC]
- 09 Nathan Rollins, HB Fuller Construction Adhesives [Greer, SC]
- 10 David King, NBHandy Company [Charleston, SC]

# NEWS FROM THE CAROLINAS



## LEARN ABOUT THE CRSMC SELF-INSURERS FUND PROGRAM

Carolinas Roofing and Sheet Metal Contractors – Self-Insurers Fund is the oldest worker's Compensation group funded in the Carolinas and could be saving your company money! Members within the CRSMC-SIF program are not just purchasing their workers compensation but investing into a program that brings additional value to their company through a commitment to ensure the safety of their employees. As a member/customer within the program, you participate in building a fund that is beneficial for all members/customers within the program, you could receive competitive rates within the insurance industry, and you could receive a return of interest determined by the CRSMC-SIF Trustees and other approved returns during the year. In the year 2018, the CRSMC-SIF returned more than **\$1 MILLION DOLLARS** to the CRSMC-SIF members!

Additionally, the CRSMC-SIF is large component of support for the CRMCA through sponsoring the CRMCA Annual Meeting/Summer Convention and attendance of Trustees at the event. **HAVE YOU CONSIDERED CRSMC-SIF FOR YOUR WORKERS COMPENSATION NEEDS?**



## WHAT IS THE CRMCA MASTER INSTALLERS CERTIFICATION PROGRAM?

The CRMCA Roofing Academy Master Installer Certification Program is designed to promote safety issues and concerns in the application of the roof systems to prepare the employee for best practices in their job performance. It is intended for the use by anyone with an interest in these roof systems, from roofing workers to foremen to supervisors. It is a culmination of efforts by contractors, manufacturers, suppliers and others who are dedicated to promoting safety.

Enrolled students will learn and train the basics of roofing, increasing their knowledge and skills to make them more valuable to their respective companies, as well as build future leaders in the roofing industry.

### HOW DO YOU GET INVOLVED?

The CRMCA Roofing Academy Committee is always searching for instructors of the classroom material and the hands-on demonstration. View the class and hands-on courses on the CRMCA website at [www.crmca.org/master\\_installers](http://www.crmca.org/master_installers). Should you wish to be an instructor, donate materials, and/or be a hands-on instructor; please contact Carla Sims at the CRMCA office at 704.556.1228 or [csims@crmca.org](mailto:csims@crmca.org).

## CRMCA MEMBER MEMORIAL NOTICES

**Fernando Ostrea, Jr. (ABC Supply Co, Inc.)** of Cary, NC and former resident of Matthews, NC passed away on September 15, 2022 at Transitions of Raleigh Hospice Care after a 6 year battle with Alzheimers.

Fernando was born in the Panama Canal Zone on 6/22/1949 to Fernando Ostrea, Sr. and Adela Ferrer Ostrea. He was a graduate of the University of Houston in Houston, TX and began his career with Owens Corning in Gainesville, FL. After being transferred to Jackson, TN and Amarillo, TX he joined the International Division of Owens Corning in Miami, FL. His last place of employment was with ABC Supply in Charlotte, NC. Fernando loved playing golf, travelling to the NC mountains and being with his family.

Fernando is survived by his wife, Karen Ostrea, and his children; Gina Gaster of Sammamish, WA and Anthony Ostrea of Durham, NC as well as son-in-law Brady Gaster and grandsons Gabriel and Lucas Gaster of Sammamish, WA.

Fond memories and expressions of sympathy may be shared at [www.BrownWynneCary.com](http://www.BrownWynneCary.com) for the Ostrea family.



**NCDOL**  
N.C. Department of Labor

[www.labor.nc.gov](http://www.labor.nc.gov)

New login procedures (using Login.gov) became effective October 2022.



Watch the HOW-TO Video...

<https://www.youtube.com/watch?reload=9&v=e6i7xHuv7Y>

OSHA provides a secure website that offers three options for injury and illness data submissions. You can manually enter your data, upload a CSV file to add multiple establishments at the same time, or transmit data electronically via an API (application programming interface).



Stress can be harmful to our physical health and increase mental health challenges. While workplaces can be a source of stress, they can also be a key place for resources to improve employee mental health and well-being. Visit OSHA's Workplace Stress webpage for employer guidance, real-world solutions and outreach materials.

## Retaliatory Rights Q & A

By Harriet Hopkins, Administrator, Retaliatory Employment Discrimination Bureau

**Q:** I work for a small company, and I earn eight hours of vacation leave each month.

There is no written vacation policy. I asked my boss if I could take five consecutive days of vacation and she said no that they couldn't manage without me for that long. I admit that I got upset and argued with her, especially because I had already rented a house at the beach. I took the time anyway and went to the beach. When I got back, she fired me, said I was insubordinate. Aren't I entitled to take my vacation whenever I want to? I had the hours.

Can she fire me for taking the vacation when I wanted to?

**A: Yes. An employer does not have to offer vacation leave to employees. You had earned vacation time, but the employer is within its rights to require any requested leave to be approved. Complaining about not being permitted to take leave when you want to is not a protected activity under the Retaliatory Employment Discrimination Act (REDA). When you took the vacation anyway, that was insubordinate. Respondent did not violate REDA.**

## Deadly Mistakes

By Judyth Forte, State Plan Coordinator

**Fatal Event:** On Feb. 21, 2018, a 23-year-old man died from a blunt force crushing injury to the neck after his forklift flipped over when he made a sharp turn with the forks loaded and raised and was not wearing a seatbelt.

**Investigative findings:** The personnel file of the employee was reviewed, and it showed that the employee had filled out his application for a loader position indicating he had intermediate experience operating a sit-down liquid propane forklift but was not certified to operate the equipment. No documentation was provided by the employer to show that the employee was trained or certified to operate the forklift he was using at the time of the incident. Interviews with employees who were operating forklifts at the facility stated that there was no formal training or skill set appraisal done before they were allowed to operate the forklifts. The employer's safety rules, located in the employee handbook, are reviewed with employees upon their hiring. The established rules stated that forklift trucks were only to be operated by authorized personnel, and employees were not authorized to operate machines or equipment until they had been properly instructed and authorized to do so by the supervisor. However, the employer did not provide a comprehensive training program, nor enforce their safety rules, which also included the use of seatbelts. Employees stated they did not wear seatbelts and employees were observed not wearing seatbelts.

**Discussion:** Forklift overturns are the leading cause of forklift related fatalities. Forklifts are relatively stable equipment if the center of gravity is directly above the vehicle's wheelbase. A sideways tip-over can happen when the center of gravity shifts too far to the left or right of the wheelbase which may occur during sharp or sudden turns or when the load is not centered on the forks. A forward tip-over can occur when the center of gravity moves too far forward, such as when a lift is driven down a slope or ramp or is overloaded with the forks raised. A load that is safe four inches off the ground may not be safe at

four feet off the ground. It is important to always maintain control of the vehicle. Speed needs to be adjusted to match the conditions and the operator must be aware of and anticipate dangerous motions, other forklift operators and pedestrians. When operating a forklift, the seatbelt must be worn. An employer is responsible for enforcing the use of seatbelts in their facility. If a forklift tips over, the seatbelt should hold the operator in place if it is operating correctly. The operator should stay in the seat and not attempt to jump off. They should lean away from the falling direction of the lift and hold onto the steering wheel, bracing their feet on the floor of the truck.

Occupational Safety and Health Administration (OSHA) standards require both classroom-style training and practical, hands-on forklift training followed by an evaluation before an operator is deemed as trained. Employers must certify that each operator has received the training and must evaluate each operator's performance at least once every three years. Refresher training must be given when an operator has been observed using a forklift in an unsafe manner or is involved in an accident or near-miss incident. OSHA states that an employer does not need to retrain an employee in the operation of a powered industrial truck (forklift) if the employer certifies that the operator has been evaluated and has proven to be competent to operate the truck safely.

### Recommendations:

- A forklift operator must be fully trained and certified before they are allowed to operate a forklift alone and must have a basic knowledge of the equipment they are operating including the lift mechanism, lift capacities, the concept of the moving center of gravity, proper backing techniques and use of authorized attachments.
- The best way to reduce the likelihood of operating an improperly maintained forklift is to conduct daily, before use, maintenance inspections. Any deficiencies should be repaired prior to forklift use, or the forklift should be taken out of service.
- Operating a vehicle at a high rate of speed can affect the operator's reaction time and may increase the risk of crashing into an object or person. As a large percentage of forklift accidents involve pedestrians, they should also be trained on how to work safely around forklifts in use in their work areas.
- Employers should provide safe work areas. A good floor plan would contain uncluttered aisles wide enough to easily maneuver equipment, good lighting, clear floor markings and directional/warning signs for all employees.

The NCDOL is pleased to offer **pre-recorded webinars** ready for you and your employees to view at your convenience. To access a webinar visit

[www.labor.communications.its.state.nc.us/OSHPublic/ETTA/class\\_regist/calendar.cfm](http://www.labor.communications.its.state.nc.us/OSHPublic/ETTA/class_regist/calendar.cfm), double-click on the applicable safety and health topic below and it will automatically start the training session.

**Note:** Some of the webinars are hosted on a training platform and will require you to log in with your name and email in order to access the training session.

*The Department of Labor does not provide certificates for employees viewing our pre-recorded webinars. These webinars were live recordings and contain chat conversations. For this reason, you will not be able to interact with the instructor during the recording. If you prefer to receive a certificate and have interaction with an instructor, please refer to our training schedule above for current live webinar offerings. Training information, registration and course details can be found at [www.labor.nc.gov/safety-and-health/training](http://www.labor.nc.gov/safety-and-health/training)*



NRCA

[www.nrca.net](http://www.nrca.net)



**MARCH 7-9, 2023 | DALLAS, TX**  
 Kay Bailey Hutchison Convention Center  
 THE PREMIER ROOFING & EXTERIORS EVENT

The **International Roofing Expo (IRE)** is the largest roofing and exteriors event in North America. Each year residential

and commercial professionals come together to meet suppliers, discover new products, network with the global industry and improve how they run their businesses.

Mark your calendar to join us for our annual three-day event with hundreds of exhibitors, 60+ educational sessions, and tons of networking opportunities — the IRE is the place to learn about the latest industry trends. **Learn more at [www.theroofingexpo.com/en/home.html](http://www.theroofingexpo.com/en/home.html).**

The **Roofing Alliance is accepting applications** for its Melvin Kruger Endowed Scholarship Program 2023-24 academic scholarships. There are three scholarship opportunities available.



- The Accredited Post-Secondary Institution Scholarship is for Roofing Alliance and NRCA member employees, their spouses and their dependent children who are pursuing postsecondary education. Construction management students enrolled at the undergraduate level, regardless of industry affiliation, in a program leading to a bachelor of science degree in construction management also are eligible.
- The Accredited Career Technical Education Scholarship is for employees, their spouses and their dependent children who are pursuing an education at a vocational or technical trade school; the scholarship is not designed for careers that require a four-year degree.
- The Diversity Scholarship is for employees, their spouses and their dependent children who are pursuing a construction science education at either an accredited postsecondary institution or an accredited vocational or technical trade school. It is open to African American, Black, Hispanic or Latino, Asian, Pacific Islanders, Native American, Native Hawaiian, Indigenous, LGBTQ+ and multi-racial students. All female students are also eligible regardless of race or ethnicity. Any other students who come from backgrounds that would add to the cause of diversity, regardless of race or gender, are eligible to apply, including applicants with physical, mental or other disabilities.

The application deadline is 5 p.m. CST on Jan. 31, 2023. The online application is available. View more information or contact Jessica Priske, the Roofing Alliance's director, at (800) 323-9545, ext. 7517 or [jpriske@roofingalliance.net](mailto:jpriske@roofingalliance.net).



[www.llr.sc.gov](http://www.llr.sc.gov)

Training information, registration and course details can be found at

[www.scosha.llronline.com/outreach/trainingspx](http://www.scosha.llronline.com/outreach/trainingspx)

### Support NRCA's Political Action Committee, ROOFPAC

ROOFPAC is the only PAC dedicated to supporting the roofing industry in Washington, D.C. Help make your voice heard as we advocate for pro-growth economic policies, career and technical education programs, bipartisan immigration reform and more! NRCA members can make a personal contribution of any amount up to \$5,000 annually online or by mail, email or fax.

You also can show your support by joining a ROOFPAC club that offers benefits and recognition by visiting [nrca.net/advocacy/ROOFPAC](http://nrca.net/advocacy/ROOFPAC) or contact Teri Dorn, NRCA's director of political affairs at 202.510.0920 or [tdorn@nrca.net](mailto:tdorn@nrca.net).



### Labor pains are everywhere

The Associated General Contractors of America released findings from its annual construction workforce survey. The survey of nearly 1,300 employers found 93% have open positions and 91% have trouble filling them, particularly among the craft workforce that performs the bulk of onsite construction work. The companies surveyed included open-shop and union contractors and ranged in annual revenue from \$50 million to \$500 million. "Construction workforce shortages are severe and having a significant impact on construction firms of all types, all sizes and all labor arrangements," says Ken Simonson, AGC's chief economist.

### OSHA floats idea for one-size-fits all gear

In September, the Occupational Safety and Health Administration submitted a notice of proposed rulemaking that would require safety gear worn by construction workers to fit all workers, including women.

Currently, OSHA requires construction employers to provide personal protective clothing such as hard hats, gloves and fall-prevention harnesses. However, the rule doesn't require the equipment to fit each worker.

The proposal is in review before the notice can be published in the Federal Register and then a public comment period will begin.

### NRCA Vice President of Certification, John Schehl, retired on Nov. 11

after 25 years of service with NRCA. Schehl spent his entire 50-year career in the roofing industry working for various roofing contracting companies before joining NRCA and spearheading its training and certification programs, most notably NRCA ProCertification.®

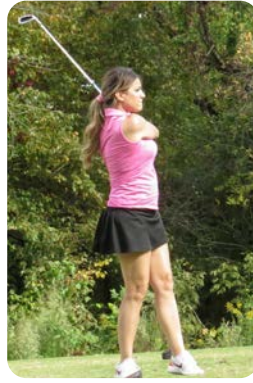
He plans to enjoy his well-earned retirement with his family, playing competitive pickleball and spending time outdoors. If you find yourself in Delevan, Wis., drop into Turtle Lake Tap and Grill where Schehl and his wife are managing partners.

Jared Ribble will assume the position of vice president of certification. Jared joined NRCA in 2017 as director of Qualified Trainer and ProCertification programs. He can be reached at [jribble@nrca.net](mailto:jribble@nrca.net).

# CRSMCA'S 5TH ANNUAL GOLF TOURNAMENT IN PHOTOS



# CRSMCA'S 5TH ANNUAL GOLF TOURNAMENT IN PHOTOS



JANUARY 17-19, 2023

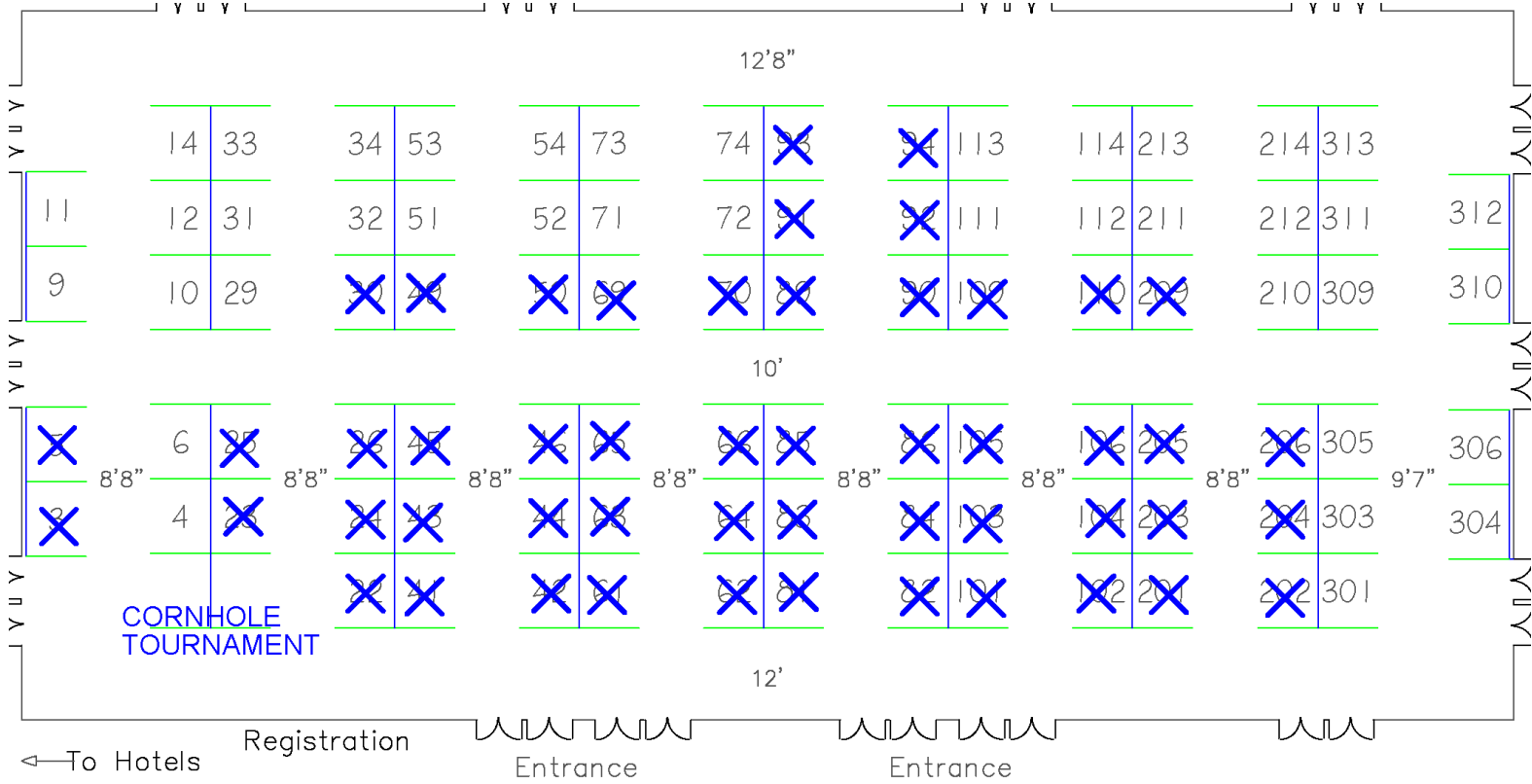
2023 CAROLINAS  
MID-WINTER  
ROOFING EXPO

BENTON CONVENTION CENTER  
WINSTON-SALEM, NC



CONFERENCE DETAILS &  
REGISTRATION FORMS

Also available online at  
[www.crsma.org/meetinginfo.php?id=64&ts=1659998834](http://www.crsma.org/meetinginfo.php?id=64&ts=1659998834)



CURRENT EXHIBITORS REGISTERED

- |                |                                   |          |                                                  |
|----------------|-----------------------------------|----------|--------------------------------------------------|
| 109            | A.C.T Metal Deck Supply           | 106      | Marco Industries                                 |
| 3, 5           | A Cleaner Chimney                 | 93       | Metal Fastening Systems                          |
| 42, 44, 61, 63 | ABC Supply Company, Inc.          | 91       | Metal Roofing Systems                            |
| 30             | American WeatherStar              | 94       | Mid-Atlantic Roofing Supply                      |
| 110            | AssuredPartners NL                | 82       | Mid-States Asphalt/Blue Ridge Fiberboard         |
| 50, 69         | Beacon Roofing Supply             | 66       | Mule-Hide Products Co., Inc.                     |
| 206            | BOSS Products                     | 92       | OMG Roofing Products                             |
| 209            | Commercial Roofing Products       | 90       | Petersen Aluminum Corporation                    |
| 105            | D.I. Roof Seamers                 | 201      | Polyglass USA, Inc.                              |
| 202            | Direct Metals, Inc.               | 84, 86   | Premier Building Products, Inc.                  |
| 22, 24, 41, 43 | Dunn & Abee, Inc.                 | 70, 89   | R.K. Hydro-Vac, Inc.                             |
| 26             | Epilay                            | 102, 104 | Roofing Tools & Equipment                        |
| 103            | Flex Membrane International Corp  | 204      | Sievert Industries                               |
| 205            | FTSynthetics                      | 45       | Union Corrugating                                |
| 46, 65         | GAF Materials Corporation         | 23       | VELUX America                                    |
| 85             | H.B. Fuller Construction Adhesive | 101      | Verisco Roofing Systems                          |
| 49             | ICP Adhesives                     | 25       | Westlake Royal Roofing Solutions - Unified Steel |
| 62, 64, 81, 83 | Integrated Products Group         |          |                                                  |
| 203            | Marathon Roofing Products         |          |                                                  |

## TUESDAY, JANUARY 17, 2023

<b>7:00AM - 4:00PM</b>	CRSMCA Master Installer Certification Class <i>TITLE &amp; COURSE INFO COMING SOON!</i>
<b>8:00AM - 5:00PM</b>	<b>Exhibitor Setup</b>
<b>11:00AM - 6:30PM</b>	<b>REGISTRATION DESK OPEN</b>
12:00PM - 1:30PM	CRSMCA Executive Committee Meeting
2:00PM - 3:00PM	CRSMCA Associate Group Liaisons Meeting
3:30PM - 5:00PM	CRSMCA Board of Directors & Associate Group Liaisons Meeting
<b>5:00PM - 6:30PM</b>	<b>EXHIBITOR'S WELCOME RECEPTION   Open Play for Cornhole Tournament</b>

## WEDNESDAY, JANUARY 18, 2023

<b>7:30AM - 5:30PM</b>	<b>REGISTRATION DESK OPEN</b>				
<b>8:00AM - 4:00PM</b>	<b>OSHA TRAINING [COURSE COMING SOON!]</b>				
<b>9:30AM - 9:45AM</b>	<b>SESSIONS HELD IN ROOM</b>  Welcome Announcements from Convention Expo Chairman & CRSMCA Business Session				
<b>9:45AM - 10:45AM</b>	<b>KEYNOTE EDUCATION [TITLE &amp; SPEAKER]</b>				
<b>15 MIN BREAK</b>					
<b>11:00AM - 12:00PM</b>	<b>EDUCATION SESSION 1 [TITLE &amp; SPEAKER]</b> <b>EDUCATION SESSION 2 [TITLE &amp; SPEAKER]</b>				
<b>12:00PM - 7:00PM</b>	<b>EXHIBIT HALL OPEN</b>				
<b>12:30PM - 1:30PM</b>	<b>EDUCATION SESSION 1 [TITLE &amp; SPEAKER]</b> <b>EDUCATION SESSION 2 [TITLE &amp; SPEAKER]</b>				
<b>2:00PM - 5:00PM</b>	<b>CASH BAR OPEN   CORNHOLE TEAMS TOURNAMENT</b>				
<b>3:00PM - 5:00PM</b>	<b>Exhibitor Demonstrations [demos every 30 mins]</b>  <table border="0" style="width: 100%;"> <tr> <td style="width: 50%;">3:00PM – 3:25PM Exhibitor [Booth #]</td> <td style="width: 50%;">3:30PM – 3:55PM Exhibitor [Booth #]</td> </tr> <tr> <td>4:00PM – 4:25PM Exhibitor [Booth #]</td> <td>4:30PM – 4:55PM Exhibitor [Booth #]</td> </tr> </table>	3:00PM – 3:25PM Exhibitor [Booth #]	3:30PM – 3:55PM Exhibitor [Booth #]	4:00PM – 4:25PM Exhibitor [Booth #]	4:30PM – 4:55PM Exhibitor [Booth #]
3:00PM – 3:25PM Exhibitor [Booth #]	3:30PM – 3:55PM Exhibitor [Booth #]				
4:00PM – 4:25PM Exhibitor [Booth #]	4:30PM – 4:55PM Exhibitor [Booth #]				
<b>5:00PM - 7:00PM</b>	<b>NETWORKING RECEPTION</b>				

## THURSDAY, JANUARY 19, 2023

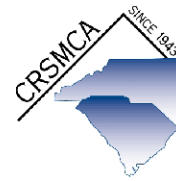
<b>8:00AM - 12:00PM</b>	<b>Exhibitor Dismantle/Move-Out</b>
<b>9:00AM - 9:30AM</b>	CRSMCA Associate Group Members/Exhibitors Pre-Selection Meeting

# CAROLINAS MID-WINTER ROOFING EXPO

JANUARY 17 – 19, 2023

Benton Convention Center

301 West 5<sup>th</sup> Street | Winston-Salem, NC 27101



CAROLINAS ROOFING AND SHEET METAL CONTRACTORS ASSOCIATION, INC.

PROFESSIONAL ROOFING CONTRACTORS COVERING THE CAROLINAS

## EXHIBITORS BOOTH & ATTENDANTS CONTRACT/REGISTRATION FORM

*\*For each booth purchased, exhibitors will receive two (2) complimentary contractor company passes for trade show entrance for customer/clients... confirmation and contractor passes will be emailed to the contact provided. Please be sure contact information is accurate!*

Company Name \_\_\_\_\_ Contact Name \_\_\_\_\_

Company Address \_\_\_\_\_ City \_\_\_\_\_ State \_\_\_\_\_ Zip Code \_\_\_\_\_

Phone \_\_\_\_\_ \*Email for confirmation \_\_\_\_\_

### SELECT MEMBER TYPE:

- CRSMCA Booth Price (1) \$900 Purchase includes 2 *COMPLIMENTARY* Booth Attendees  
Each additional \$500 each *(no complimentary attendees included)*
- Non-Member Booth Price (1) \$1500 Purchase includes 2 *COMPLIMENTARY* Booth Attendees  
Each Additional \$650 each *(no complimentary attendees included)*

PLEASE REVIEW THE RULES AND REGULATIONS, FORWARD YOUR ACKNOWLEDGMENT TO CRSMCA

BOOTH SELECTION(S): (1) \_\_\_\_\_ (2) \_\_\_\_\_ (3) \_\_\_\_\_

TOTAL BOOTH COST: \_\_\_\_\_

FIRST TIME EXHIBITOR **-\$50.00**

### Please Register the Following Attendants:

- |                                           |                                           |
|-------------------------------------------|-------------------------------------------|
| 1. _____<br>NAME (COMPLIMENTARY) CITY, ST | 2. _____<br>NAME (COMPLIMENTARY) CITY, ST |
| 3. _____<br>NAME (\$95.00) CITY, ST       | 4. _____<br>NAME (\$95.00) CITY, ST       |
| 5. _____<br>NAME (\$95.00) CITY, ST       | 6. _____<br>NAME (\$95.00) CITY, ST       |
| 7. _____<br>NAME (\$95.00) CITY, ST       | 8. _____<br>NAME (\$95.00) CITY, ST       |

TOTAL ATTENDANTS COST: \_\_\_\_\_

FINAL TOTAL: \_\_\_\_\_

PAYMENT INFORMATION:  Check Enclosed  MasterCard/VISA\*\*  American Express\*\*

**\*\*BEGINNING NOVEMBER 1, 2022: CRSMCA WILL BE ADDING A 3% CONVENIENCE FEE TO ALL CREDIT CARD CHARGES!**

Credit Card Number \_\_\_\_\_ Expiration Date \_\_\_\_\_ CVV Code \_\_\_\_\_

Name on Card \_\_\_\_\_ Signature \_\_\_\_\_

**FOR OFFICE USE ONLY:**

\_\_\_\_\_

Date Received \_\_\_\_\_

\_\_\_\_\_

Date Entered \_\_\_\_\_

\_\_\_\_\_

Entered By \_\_\_\_\_

### PLEASE RETURN FORM WITH REGISTRATION FEES TO:

CRSMCA  
PO BOX 7643  
CHARLOTTE, NC 28241-7643

EMAIL TO: [cbsims@crsmca.org](mailto:cbsims@crsmca.org)

CANCELLATIONS MUST BE SUBMITTED IN WRITING AND RECEIVED BY THE CRSMCA OFFICE BY DECEMBER 1, 2022. A 50% CANCELLATION FEE WILL BE APPLIED TO THE REFUND.  
  
CRSMCA WILL **NOT** GRANT ANY REFUNDS AFTER DECEMBER 1, 2022.

# CAROLINAS MID-WINTER ROOFING EXPO

JANUARY 17 – 19, 2023

Benton Convention Center

301 West 5<sup>th</sup> Street | Winston-Salem, NC 27101



CAROLINAS ROOFING AND SHEET METAL  
CONTRACTORS ASSOCIATION, INC.

PROFESSIONAL ROOFING CONTRACTORS COVERING THE CAROLINAS

## RULES & REGULATIONS

### 1. INSURANCE:

It shall be the responsibility of each exhibitor to maintain Commercial General Liability Insurance. The Limits for bodily injury and property damage combined shall be at least \$1,000,000. Certificates of Insurance stating such limits shall also provide that the policy may not be cancelled without 15 days advance written notice to CRSMCA and must be in effect starting with the first move-in day of the show through the last move-out day of the show. All property of the exhibitor is understood to remain under his/her custody and control, in transit to/and from the confines of the Benton Convention Center, subject to the rules and regulations of the exposition.

**Certificate of Insurance must be sent to the CRSMCA office by Dec 15, 2022.**

### 2. EXHIBITORS MEETING:

There will be an Exhibitors Meeting for a lottery of the 2024 Booths on **Thursday, January 19, 2023**, time and location will be published in the program.

**Exhibitors must be present to make selection.**

### 3. LIABILITY:

The Exhibitor agrees to protect, save and keep the CRSMCA and the Benton Convention Center and their representatives, employees and agents forever harmless from any and all damages or charges imposed for violation of any law or ordinance, whether occasioned by the negligence of the Exhibitor or the representatives, agents or those persons acting under the express or implied authority of the Exhibitor. The Exhibitor assumes complete responsibility and liability for all loss, damage, or destruction of his/her property, employees, agents, and guests. The CRSMCA and Benton Convention Center, any officer, agent or employee thereof will not be liable for any loss, damage or destruction of Exhibitors property by accident or any other cause by the Exhibitor, its agents, representatives, or employees. The Exhibitor will indemnify and hold harmless the CRSMCA and the Benton Convention Center, their members, directors, officers, agents, representatives, and employees against any and all liability whatsoever arising from any or all damage to property or personal injury or loss caused by the Exhibitor, its agents, representatives, employees, or any other such persons.

### 4. FIRE AND SAFETY REGULATIONS:

Fire regulations require that all display materials be fire retardant. Combustible materials are not permitted to be stored in or around exhibit spaces. Automobiles, trucks, tractors, machinery, and other vehicles that use sealed and battery cables shall be disconnected from the ignition system. Electrical signs and equipment must be wired to meet the specification of the local Code. Prefab exhibits shall have inspection access panels to inspect electrical wiring. Each exhibitor is charged with knowledge of all laws, ordinances, and regulations pertaining to health, fire protection, and public safety while participating in the exhibit. Compliance with such laws is mandatory for all exhibitors and the sole responsibility shall be that of the exhibitor.

### 5. BOOTH ASSIGNMENTS:

Booth assignments will be confirmed and advertised only when the deposit/full payment is received along with a signed contract. **Full payment is due by Nov 30, 2022.** Please note that membership dues & assessments **must be paid** before booth space is confirmed.

**CRSMCA MEMBERSHIP DUES MUST BE CURRENT AND IN GOOD STANDING OR NONMEMBER RATES WILL APPLY!**

Preferred booth location is granted when possible. The committee reserves the right to relocate a booth if necessary.

### 6. BOOTH RATE & CANCELLATION POLICY:

2023 Booth prices for CRSMCA members are \$900 for one booth and up to two attendees. An additional booth is \$500 each and an additional attendee is \$95 each. Non-Member booth price is \$1,500 each and an attendee is \$95 each. **No permanent space assignments will be made until DEPOSIT/FULL payment and signed contract is received by the CRSMCA office (full payment is due by Nov 30, 2022.)** Cancellations must be received in writing and received prior to December 1, 2022. A 50% cancellation fee will apply for booth(s) and/or attendee(s). **No** booth or attendee refunds will be issued after December 1, 2022.

**CRSMCA makes no representation to any exhibitor on the quality or quantity of visitations that the company may expect at the Carolinas Mid-Winter Roofing Expo.**

### 7. EXHIBIT HALL PASSES:

Exhibit Hall passes **will not** be available to Vendors. The Exhibit Hall passes will be for Contractor employees, Architects, Engineers, etc.

### 8. DRAYAGE & FREIGHT HANDLING:

Freight sheet information is to be supplied to exhibitors by Carolina Tradeshow Decorators: 704.366.9970

### 9. BOOTH SPACE INCLUSIONS:

The 10' x 10' booth space will include 3' high side drapes, one 2' x 8' skirted table, two chairs, one wastebasket, one 7" x 44" identification sign ("island booths" will receive a 22" x 28" sign on easel). All isles and booths will be carpeted at no charge to the exhibitor.

### 10. INSTALLATION OF EXHIBITS:

Installation of exhibits may begin at 8:00 a.m. on Tuesday, January 17, 2023, and must be completed no later than 5:00 p.m. that day. The Exhibitor may forfeit space not occupied by 5:00 p.m. on Tuesday, January 17, 2023, and this space may be resold, reassigned, or used by the Committee. **PLEASE NOTE THAT IF YOU ARRIVE AFTER 5:00 P.M. ON INSTALLATION DAY, YOUR BOOTH SPACE WILL NOT BE GUARANTEED.**

Exhibits must be constructed so as not to obstruct the general view of adjoining booths.  **AISLES CANNOT BE SPLIT.**

### 11. SOUND DEVICES:

The use of sound devices, megaphones, loudspeakers, or undignified methods of attracting attention is prohibited.

### 12. DISMANTLING AND REMOVAL OF DISPLAYS:

The dismantling period begins at 8:00 a.m. Thursday, January 19, 2023, and continues until 5:00 p.m. Thursday, January 19, 2023. The Exhibitor authorizes the Benton Convention Center to remove, at the Exhibitors expense, any material in the exhibit area belonging to said Exhibitor after 5:00 p.m. Thursday, January 19, 2023.

**PLEASE CONTACT THE CRSMCA SHOULD YOU NEED TO DISMANTLE PRIOR TO 8:00am, THURSDAY, JANUARY 19, 2023!**

### 13. SECURITY:

Security personnel will be on duty, but the presence of such personnel shall not be deemed to increase the liability of CRSMCA, its members, representatives or official service contractors, employees or the Benton Convention Center, its representatives, and employees.

### 14. PROHIBITIONS:

Aisle space may **NOT** be used for exhibit purpose, displays or signs, solicitation or distribution of cards, circulars, samples, or other promotional materials. Absolutely no alcoholic beverages will be served by the exhibitors at their booths.

### 15. EXHIBITORS AND PUBLIC POLICY:

Each exhibitor is charged with knowledge of all laws, ordinances and regulations pertaining to health, fire prevention, public safety, while participating in this exhibition. Compliance with such laws is mandatory for all exhibitors and is the sole responsibility of that exhibitor.

### 16. EXHIBITOR CONDUCT:

Distribution by the exhibitor of any printed matter, souvenirs, or other articles must be confined to the space assigned. If an exhibitor engages in on-location transactions, the exhibitor will be responsible for complying with all Federal, State, and local laws that may pertain to such sales.

### 17. AMENDMENT TO REGULATIONS:

All matters and questions not covered by these regulations are subject to the decision of the CRSMCA Mid-Winter Roofing Expo Committee who sole authority shall have to promulgate, interpret, and enforce all rules and regulations, and to make any amendments necessary for the orderly conduct of the Carolinas Mid-Winter Roofing Expo.

**FOR ADDITIONAL INFORMATION PLEASE CONTACT:**

Phone: 704.556.1228

Carla Sims, CRSMCA Executive Director, ext 402  
[cbsims@crsmca.org](mailto:cbsims@crsmca.org)

Karin Barahona, CRSMCA Assistant, ext 403  
[staff@crsmca.org](mailto:staff@crsmca.org)

# CRSMCA CAROLINAS MID-WINTER ROOFING EXPO

JANUARY 17 – 19, 2023

Benton Convention Center

301 West 5<sup>th</sup> Street | Winston-Salem, NC 27101



## ACKNOWLEDGEMENT OF RECEIPT AND UNDERSTANDING

*Please return with your signature for confirmation of booth purchase(s)*

### I understand and/or agree that:

The statements contained in the CRSMCA Carolinas Mid-Winter Roofing Expo Rules and Regulations are intended to serve as general information concerning CRSMCA's Carolinas Mid-Winter Roofing Expo and the Benton Convention Center and its existing policies, procedures, and practices of the Carolinas Mid-Winter Roofing Expo.

Nothing contained in the CRSMCA Carolinas Mid-Winter Roofing Expo Rules and Regulations is intended to create (nor shall be construed as creating) a contract (express or implied).

From time-to-time CRSMCA may need to clarify, amend and/or supplement the information contained in the CRSMCA Carolinas Mid-Winter Roofing Expo Rules and Regulations and CRSMCA will provide its exhibitors with a revised CRSMCA Carolinas Mid-Winter Roofing Expo Rules and Regulations when changes occur.

I have received a copy of the CRSMCA Carolinas Mid-Winter Roofing Expo Rules and Regulations, I have read and understand the information outlined in the Rules and Regulations, I understand that penalties may incur if not abided by, I have asked any questions I may have concerning its contents, and I will comply with all policies and procedures to the best of my ability.

---

Exhibitors Company

---

Exhibitors Contact

---

Exhibitors Signature

Date

**THIS COPY OF THE ACKNOWLEDGEMENT SHOULD BE REMOVED AND GIVEN TO THE CRSMCA OFFICE FOR CONFIRMATION OF BOOTH PURCHASE(S).**

**MAIL TO: CRSMCA**  
PO Box 7643  
Charlotte, NC 28241-7643

**EMAIL TO: [cbsims@crsmca.org](mailto:cbsims@crsmca.org)**

# CAROLINAS MID-WINTER ROOFING EXPO

JANUARY 17 – 19, 2023

Benton Convention Center

301 West 5<sup>th</sup> Street | Winston-Salem, NC 27101



## BOOTH DESCRIPTION | CERTIFICATE OF INSURANCE REQUEST | HOTEL

CRSMCA will place your **BOOTH DESCRIPTION** in the CRSMCA *Carolinas Contacts* Magazine and the Carolinas Mid-Winter Roofing Expo Program. Please limit your information to 50 words or less, of what your company will exhibit/display for the attendees of the Carolinas Mid-Winter Roofing Expo. **Please return this to CRSMCA by December 15, 2022 via mail OR email.**

---

---

---

---

---

It shall be the responsibility of each **exhibitor to maintain Commercial General Liability and Blanket Contractual Liability Insurance**. The limits for bodily injury and property damage combined shall be at least \$1,000,000. Certificates of Insurance stating such limits shall also provide that the policy may not be cancelled without 15 days advance written notice to the Carolinas Roofing and Sheet Metal Contractors Association, Inc. All property of the exhibitor is understood to remain in his custody and control, in transit to and from, the confines of the hall, subject to the rules and regulations of the exhibition. **Exhibiting companies must provide a Certificate of Insurance evidencing the required insurance coverage.** This coverage must be in effect January 17, 2023 through and including the final move-out date of January 19, 2023. Your company name must appear on the Certificate of Insurance as it is registered with the Association. Please forward this requirement to your insurance company. **You may forward Certificates of Insurance to the following address:**

Carolinas Roofing and Sheet Metal Contractors Association, Inc.  
PO Box 7643  
Charlotte, NC 28241-7643

## HOST HOTELS:

Group rates will be available until **December 19, 2022** or until the room block is sold out, be sure to book early! **BOOKING ONLINE AVAILABLE: Visit CRSMCA website for QUICK LINKS!**



Marriott Winston-Salem  
[425 Cherry Street N | Winston-Salem, NC]  
Phone: 336.725.3500 | Group Code: Mid-Winter Roofing

Embassy Suites by Hilton Winston-Salem  
[460 Cherry Street N | Winston-Salem, NC]  
Phone: 336.724.2300 | Group Code: Carolina Roofing

# CAROLINAS MID-WINTER ROOFING EXPO REGISTRATION FORM

JANUARY 17 – 19, 2023

Benton Convention Center

301 West 5<sup>th</sup> Street | Winston-Salem, NC 27101



Company Name		Contact Name	
Company Address		City	State Zip Code
Phone		*EMAIL FOR CONFIRMATION	

## COMPLIMENTARY REGISTRATION FOR COMPANY JOINING CRSMCA AT TIME OF REGISTRATION!

- Contractor *\$75.00 PER COMPANY*
  - Non-Exhibitor [Mfr/Dist] *\$325.00 PER PERSON*
  - Architect/Engineer/Consultant (COMPLIMENTARY REGISTRATION) AIA|RCI NO. \_\_\_\_\_
- |                                                                                                                        |                                                                                                                        |
|------------------------------------------------------------------------------------------------------------------------|------------------------------------------------------------------------------------------------------------------------|
| 1. _____<br>NAME   Register for <input type="checkbox"/> Master Installer Class <input type="checkbox"/> OSHA Training | 2. _____<br>NAME   Register for <input type="checkbox"/> Master Installer Class <input type="checkbox"/> OSHA Training |
| 3. _____<br>NAME   Register for <input type="checkbox"/> Master Installer Class <input type="checkbox"/> OSHA Training | 4. _____<br>NAME   Register for <input type="checkbox"/> Master Installer Class <input type="checkbox"/> OSHA Training |
| 5. _____<br>NAME   Register for <input type="checkbox"/> Master Installer Class <input type="checkbox"/> OSHA Training | 6. _____<br>NAME   Register for <input type="checkbox"/> Master Installer Class <input type="checkbox"/> OSHA Training |

### PAYMENT INFORMATION:

- Check Enclosed
  - MasterCard/VISA\*\*
  - American Express\*\*
  - AMOUNT DUE CRSMCA: \$ \_\_\_\_\_
- \*\*BEGINNING NOVEMBER 1, 2022: CRSMCA WILL BE ADDING A 3% CONVENIENCE FEE TO ALL CREDIT CARD CHARGES!**

Credit Card Number	Expiration Date	CVV CODE
--------------------	-----------------	----------

Name on Card	Signature
--------------	-----------



### HOST HOTELS:

Group rates will be available until **December 19, 2022** or until the room block is sold out, be sure to book early! **BOOKING ONLINE AVAILABLE: Visit CRSMCA website for QUICK LINK!**

#### Marriott Winston-Salem

[425 Cherry Street N | Winston-Salem, NC]  
Phone: 336.725.3500 | Group Code: Mid-Winter Roofing

#### Embassy Suites by Hilton Winston-Salem

[460 Cherry Street N | Winston-Salem, NC]  
Phone: 336.724.2300 | Group Code: Carolina Roofing Sheet Metal

### PLEASE RETURN FORM WITH REGISTRATION FEES TO:

CRSMCA  
PO BOX 7643  
CHARLOTTE, NC 28241-7643  
EMAIL: [cbsims@crsmca.org](mailto:cbsims@crsmca.org)

<b>FOR OFFICE USE:</b>  _____ Date Received  _____ Date Entered  _____ Entered By	CANCELLATIONS MUST BE SUBMITTED IN WRITING AND RECEIVED BY THE CRSMCA OFFICE BY DECEMBER 1, 2022. A 50% CANCELLATION FEE WILL BE APPLIED TO THE REFUND.  CRSMCA WILL NOT GRANT ANY REFUNDS AFTER DECEMBER 1, 2022.
--------------------------------------------------------------------------------------------------------------	--------------------------------------------------------------------------------------------------------------------------------------------------------------------------------------------------------------------------

## SPONSORSHIP OPPORTUNITIES

CRSMCA would like to **thank you** for your consideration in becoming a sponsor. All sponsorships are applied to the **advancement of education** to the CRSMCA membership.

**\$5,000 CORPORATE\***

Complimentary banner; ONE complimentary booth; complimentary ½ page ad in the Carolinas Contacts Magazine; signage at the Carolinas Mid-Winter Roofing Expo; listing in the *Carolinas Contacts Magazine* and on the CRSMCA website

**\$3,000 PLATINUM**

**Opening Reception**

ONE complimentary booth; complimentary ½ page ad in the Carolinas Contacts Magazine; signage at the Carolinas Mid-Winter Roofing Expo; listing in the *Carolinas Contacts Magazine* and on the CRSMCA website

**\$2,000 DIAMOND**

**Wednesday Reception**

**Wednesday Lunch**

TWO complimentary attendees; complimentary ½ page ad in the Carolinas Contacts Magazine; signage at the Carolinas Mid-Winter Roofing Expo; listing in the *Carolinas Contacts Magazine* and on the CRSMCA website

**\$1,500 GOLD**

**Wednesday Breakfast**

**Lanyards**

Complimentary ½ page ad in the Carolinas Contacts Magazine; signage at the Carolinas Mid-Winter Roofing Expo; listing in the *Carolinas Contacts Magazine* and on the CRSMCA website

**\$1,000 SILVER**

**Badges**

**Audio/Visual**

Complimentary ¼ page ad in the Carolinas Contacts Magazine; signage at the Carolinas Mid-Winter Roofing Expo; listing in the *Carolinas Contacts Magazine* and on the CRSMCA website

**\$ 750 BRONZE**

Complimentary business card ad in the Carolinas Contacts Magazine; signage at the Carolinas Mid-Winter Roofing Expo; listing in the *Carolinas Contacts Magazine* and on the CRSMCA website

**\$ 300 CONTRACTOR GOODWILL**

Listing in the *Carolinas Contacts Magazine* and on the CRSMCA website, free company admission

**\$ 200 PAST PRESIDENT**

Listing in the *Carolinas Contacts Magazine* and on the CRSMCA website (*for CRSMCA past presidents only*)

**Method of Payment:**

Amount Enclosed \$ \_\_\_\_\_ Check # \_\_\_\_\_

Amount to be charged \$ \_\_\_\_\_  American Express\*\*  MasterCard/Visa\*\*

**\*\*BEGINNING NOVEMBER 1, 2022: CRSMCA WILL BE ADDING A 3% CONVENIENCE FEE TO ALL CREDIT CARD CHARGES!**

\_\_\_\_\_  
Company Sponsoring Contact Name

\_\_\_\_\_  
Card Number Exp. Date CVV

\_\_\_\_\_  
Name (as it appears on the card) Signature

**Please send the form with payment information to the following address or email:**

Carolinas Roofing and Sheet Metal  
Contractors Association, Inc.  
P O Box 7643  
Charlotte, NC 28241-7643

[cbsims@crsmca.org](mailto:cbsims@crsmca.org)

-----  
**\*\*Please return by December 15, 2022 to be listed in the Carolinas Contacts Magazine.**  
-----

**\*\*PLEASE SUBMIT YOUR COMPANY LOGO VIA EMAIL TO [CBSIMS@CRSMCA.ORG](mailto:CBSIMS@CRSMCA.ORG) TO BE PRESENTED DURING GENERAL SESSIONS**

## The Second Round

ICC's 2024 code development process

Written by Mark Graham, NRCA Technical Services, Professional Roofing March 2022

As development of the 2024 I-Codes continues, NRCA monitors progress and actively participates in developing the codes' roofing-related provisions. Following is a brief update about the status of the 2024 I-Codes.

### Group A

The International Code Council® has split its development process for the 2024 I-Codes into two groups: Group A, which occurred in 2021, and Group B, which occurs this year. Although most of the roofing-related content in the International Building Code®'s Chapter 15-Roof Assemblies and Rooftop Structures and International Residential Code®'s Chapter 9-Roof Assemblies falls within Group B, several roofing-related topics were addressed in Group A, including attic ventilation, rooftop occupancy requirements, the plumbing code's roof drainage requirements and the fire code.

At ICC's Group A committee action hearings, which were held online April 11-May 5, 2021, more than 1,250 code change proposals were considered. Thirty-two proposals directly applied to roof assembly design and installation.

ICC held its Group A public comment hearings Sept. 21-25, 2021. The hearings offered proponents of code changes and other interested parties an opportunity to attempt to amend or overturn the committees' recommendations from the committee action hearings. The public comment hearings had 339 code change proposals on the agenda. Six proposals from NRCA's roofing-specific watchlist were on the agenda, and four were approved during the public comment hearings.

Code Change S10 provides IBC code requirements for raised deck paver walkways, such as pavers on raised pedestals. Previously, the code did not specifically address these assemblies, which sometimes resulted in inconsistent interpretations of the code's requirements.

Code Change G20 establishes occupant load and exit and egress requirements for occupiable roofs, such as vegetative roofs with assembly areas and rooftop patios and terraces. Previously, IBC had limited requirements applicable to occupied roofs and, as a result, interpretations varied.

Code Change F15 differentiates between vegetative roofs and landscaped roofs in the IBC and International Fire Code.® With this code change, a landscaped roof is a localized area on a roof that includes landscape planters, vegetation and hardscape. A vegetative roof is a roof assembly with vegetation throughout. IBC and IFC previously used the two terms interchangeably, which sometimes resulted in confusion and inconsistent interpretations.

Code Change WUIC15 as it applies to the International Wildland-Urban Interface Code® requires vents, including attic intake and exhaust vents, to be tested for entry of burning embers and direct flame impingement or meet specific prescriptive criteria.

From Oct. 15-Nov. 1, 2021, ICC held its online governmental consensus vote to ratify the decisions resulting from the public comment hearings. The published results of the online governmental consensus vote show ICC's code official members ratified all but four of the decisions. None of the four code change proposals overturned by the online governmental consensus vote were on NRCA's roofing-specific watchlist.

### Group B

ICC's Group B covers most of the requirements in IBC's Chapter 15, IRC's Chapter 9 and the International Existing Building Code.® Reroofing is addressed in IEBC's Chapter 7-Alterations-Level 1.

The deadline for submitting Group B code change proposals was Jan. 10. NRCA submitted 29 code change proposals to IBC, IRC and IEBC. Several manufacturers and other roofing associations also submitted Group B code change proposals.

ICC published its monograph of Group B code change proposal submissions on its website, iccsafe.org, Feb. 23.

ICC's Group B committee action hearings will be held March 27-April 6. ICC's Group B public comment hearings will be held Sept. 14-21 in conjunction with ICC's annual conference. The Group B online governmental consensus vote will start about two weeks after the conclusion of

the public comment hearings and be open for two weeks.

The code change proposals already approved during ICC's Group A and those that will be approved during the Group B process will be published as the 2024 I-Codes in mid-2023. The 2024 I-Codes are intended for first adoption by state and local jurisdictions no earlier than 2024.

### Closing thoughts

NRCA has been an active participant in ICC's code development process since its inception in the late 1990s. NRCA also participated in the code development processes of the legacy model codes since they first included roofing-specific chapters in the mid-1980s. I have represented NRCA at the legacy codes' and ICC's code development processes since 1993.

NRCA members can direct code-related questions to NRCA's Technical Services Section at (847) 299-9070, option 4, or [nrcatechnical@nrca.net](mailto:nrcatechnical@nrca.net).

*MARK S. GRAHAM is NRCA's vice president of technical services.*

**METAL DECK SUPPLY**

## METAL DECK REPLACEMENT? WE HAVE IT IN STOCK NOW!

**YOUR ONE-STOP METAL DECK SHOP!**

- LARGEST INVENTORY IN STOCK FOR IMMEDIATE USE
- VARIETY OF DECK IN STOCK
- PICK UP OR DELIVERY
- KNOWLEDGEABLE STAFF
- MOBILE WEBSITE

CONTACT US TODAY FOR THE BEST SERVICE AND LEAD TIME

**METALDECKSUPPLY.COM**

800.894.7741 | SALES@METALDECKSUPPLY.COM

PROUD MEMBER  
National Metal Decking Association

## Know the Facts

*Cold roof construction can cause several problems in northern climates*

Written by Matt Dupuis, Ph.D., PE, Professional Roofing March 2022

During the past several years, there have been frequent media reports about a looming U.S. housing crisis.

In response, architects, engineers, contractors and real estate developers have been producing more multifamily residential construction projects. But these new buildings routinely have been sources of litigation for the roofing industry because of moisture-related failures in northern climates.

For multifamily residential construction, it generally is less expensive to construct low-slope roof assemblies. Although the use of wood or light-gauge steel trusses to create steep-slope systems for these buildings is possible, steep-slope systems can become surprisingly expensive because of the building code's fire resistance requirements and/or smoke walls in the attics along with a dry sprinkler system in the attic space. Therefore, many new multi-unit buildings have low-slope single-ply membrane roof systems.

These new buildings almost exclusively use parallel cord wood trusses, sometimes called floor trusses, because they create a level surface. These floor trusses can be used to create a roof structure, as well. Floor trusses typically are manufactured with a slight slope, such as ¼:12, on the top chord of the truss and no slope on the bottom of the truss to form the ceiling of top-floor units. When contractors install a ¾-inch-thick or thicker oriented strand board on top of these trusses, a roof deck is created with minimal labor and materials.

Above the ceiling of the top-floor apartment, a vapor retarder will be installed. Then, resilient channels and drywall will be installed to make the ceiling. Now, a space is created between the roof deck above and drywall below. The space created by the truss and board products is the only space available for an HVAC contractor, electrical contractor, fire alarm contractor and other trades to run their ducts and wiring. Figure 1 shows an architectural representation of the construction cross-section. Photo 1 shows a roof and truss system for a building under renovation that was constructed in this manner.

At this point, most roofing contractors would not give a project like this a second thought: The roofing work will be straightforward with standard details and materials. Unfortunately, there is a problematic twist: The project has a budget, and the designer will use construction techniques and/or materials that can save costs.

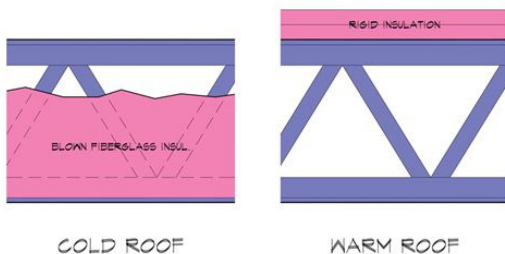
This construction concept routinely is known as value engineering.

Many decisions will be made in the name of value engineering. A lower grade of carpet may be selected, for example, or less expensive appliances installed. However, the one decision that has led to numerous moisture-based roof system failures is providing the code-required roof insulation by blowing fiberglass insulation into the interstitial cavity between the ceiling and the roof deck, identified in Figure 1. This creates a condition called a cold roof.

### How it functions

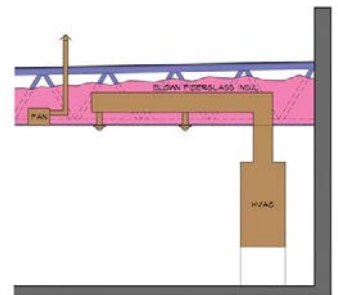
A cold roof is a simple concept. For steep-slope applications, NRCA states: "If a roof system is designed as a 'cold roof,' insulation will not be part of the roof system and will be located at the ceiling level of the building." This definition also can be applied to a low-slope roof system.

Conversely, a warm roof would have insulation that is part of the roof system. Figure 2 demonstrates the difference between a cold and warm roof in low-slope applications.



For a cold roof, the typical insulation used is blown fiberglass with installed thicknesses of 24 inches or more, having a substantial R-value of R-60. Although blown fiberglass provides excellent R-value, it is one of the most air- and water vapor-permeable construction products in use.

This means air currents can move through and within the blown mass. In addition, blown fiberglass allows water vapor to pass through it as the blown fiberglass is effectively more than 90% air by volume.



**AssuredPartners**

**Solutions - Not Just Insurance!**

- Personal Insurance
- Employee Benefits
- Commercial Insurance
- Surety
- Risk Management

**Cindy Shumpert**  
P 803.732.6331  
Cindy.Shumpert@AssuredPartners.com

Proudly Supporting  
**CRSMCA**

Look again at Figure 1. All the HVAC ducts, bathroom fan ducts and clothes dryer ducts are run through the blown fiberglass insulation, and these ducts will leak air. There are numerous industry papers and guidance about this issue. The Sheet Metal and Air Conditioning Contractors' National Association publishes the industry standard test for air leakage. Tellingly, the standard's tables and equations do not have zero leakage as an option, so the construction industry accepts the ducts will leak. However, some designers argue the ducts can be perfectly sealed.

For example, consider a building with a cold roof that has a single-ply membrane adhered to a gypsum cover board that is mechanically fastened to an OSB roof deck. All the R-60 insulation is below the OSB roof deck. The building is in a northern climate. Winter temperatures can reach 0 F or colder. There will be forced air passing through the HVAC ducts in the plenum space. Hot, moisture-laden air from bathroom fans will pass through the ducts. And hot, moisture-laden air from clothes dryers also will pass through this interstitial space, bypassing the vapor retarder in the ceiling assembly all the while leaking air. This process goes on all winter long.

This is when a cold roof can present issues. All the effective insulation is below the OSB roof deck. The OSB roof deck will be at or near the temperature of the outside air during the day and typically below the outside air temperature at night. This construction offers a high probability of condensation occurring. The result is moisture-based decay of the OSB roof deck and wood truss members as well as potential biological growth (mold) on the wood surfaces. Photos 2 and 3 show openings into cold roofs with moisture damage and biological growth. When this situation occurs, the blame game and finger pointing begins among the construction and design teams. Because moisture is involved under the roof membrane, the roofing contractor and roofing manufacturer are often part of the conversation. Note this happens even though there may have been no leaks reported or deficiencies found with the roof membrane. Finally, because of the large monetary amounts required to remediate the issue, lawyers and insurance companies always are next to become involved.

**Prevention**

Given the propensity of designers and the demands of society, cold roof designs likely will continue. But there is a simple way to prevent this problem: Use a warm roof design. To create a warm roof design for a low-slope roof, a designer needs only to move insulation above the roof deck as rigid insulation. Depending on designer preferences and local building and energy codes, this amount of continuous above-deck insulation can vary.

Photos 4 and 5 show OSB roof decks in a northern climate that had all insulation above their roof decks (classic warm roof) or rigid board crickets above the roof decks and blown insulation in the interstitial space between the ceiling and the roof deck (more of a hybrid approach). In both situations, the OSB was in good condition with no signs of issues after years of service. This primarily is because the insulation placed above the deck kept the OSB above the dew point. Temperature- and moisture-based simulations suggest even an R-value between 5 and 10 above a roof deck is sufficient to prevent moisture accumulations in ASHRAE Zone 6. Higher R-value likely may be needed further north.

**Advice**

Based on the data and information available, the following points should be noted:

- Cold roof assemblies over interstitial spaces with any ductwork in northern climates have proved to be risky.
- Warm roof system designs are far more likely to perform successfully over interstitial spaces with any ductwork in northern climates.
- A minimum of R-5 to R-10 above the roof deck (in addition to code-required insulation) appears to be sufficient to protect a roof deck from moisture accumulation in northern climates (ASHRAE Zone 6).
- Roofing contractors and roofing manufacturers should consider avoiding projects with cold roofs.
- If you find yourself involved with a cold roof project, at a minimum you should alert the construction team, including the designer of record, of the high failure rate of cold roofs in cold climates. I encourage you to forward a copy of this article.
- When in doubt, contact an expert who can provide calculations and/or simulations to justify design choices involving cold or warm roofs.



**COMMERCIAL SALES CENTERS  
CAROLINAS**

Servicing All Your Commercial Roofing Needs

**PRO+ Digital Suite**

- Delivery Tracking
- Digital Order Entry
- Order History
- Online Bill Pay
- Custom Order Templates
- Branch Locator

**Engineering Support**

- Lead Generation
- Job Tracking
- Job Quotes
- Tapered Design
- Metal Design
- LEED-Green

**Project & Business Support**

- Tech Support
- Logistics
- Material Sourcing
- Product Updates
- Data Bulletins
- Quick Turn-Around

5945 Harris Technology Blvd.  
Charlotte, NC 28269  
**833-552-2122**  
Servicing Charlotte, Upstate SC,  
Asheville, Statesville Markets

1240 Atlas Road  
Columbia, SC 29209  
**866-580-0552**  
Servicing Columbia, Charleston  
& Myrtle Beach Markets

1424 S Bloodworth St.  
Raleigh, NC 27610  
**833-408-1911**  
Servicing Raleigh, Greensboro  
& Eastern NC Markets



MATT DUPUIS, Ph.D., P.E., is a principal with SRI Consultants, Middleton, Wis.



# WINTER WEATHER PREPARATION

*Prevent injuries, illnesses and fatalities during winter storms.*

Winter weather presents hazards including slippery roads/surfaces, strong winds and environmental cold. Employers must prevent illnesses, injuries, or fatalities, by controlling these hazards in workplaces impacted by winter weather.

OSHA and National Oceanic and Atmospheric Administration (NOAA) are working together on a public education effort aimed at improving the way people prepare for and respond to severe weather. This page is designed to help businesses and their workers prepare for winter weather, and to provide information about hazards that workers may face during and after winter storms.

## Cold Stress Can Be Prevented

It is important for employers to know the wind chill temperature so that they can gauge workers' exposure risk better and plan how to safely do the work. It is also important to monitor workers' physical condition during tasks, especially new workers who may not be used to working in the cold, or workers returning after spending some time away from work.

The National Oceanic and Atmospheric Administration (NOAA) Weather Radio is a nationwide network of radio stations broadcasting continuous weather information from the nearest NWS office. It will give information when wind chill conditions reach critical thresholds. A Wind Chill Warning is issued when wind chill temperatures are life threatening. A Wind Chill Advisory is issued when wind chill temperatures are potentially hazardous.

## Who is affected by environmental cold?

Environmental cold can affect any worker exposed to cold air temperatures and puts workers at risk of cold stress. As wind speed increases, it causes the cold air temperature to feel even colder, increasing the risk of cold stress to exposed workers, especially those working outdoors, such as recreational workers, snow cleanup crews, construction workers, police officers and firefighters. Other workers who may be affected by exposure to environmental cold conditions include those in transit, baggage handlers, water transportation, landscaping services, and support activities for oil and gas operations.

## Preventing Slips on Snow and Ice

To prevent slips, trips, and falls, employers should clear snow and ice from walking surfaces, and spread deicer, as quickly as possible after a winter storm.

When walking on snow or ice is unavoidable workers should be trained to:

- Wear footwear that has good traction and insulation (e.g. insulated and water resistant boots or rubber over-shoes with good rubber treads)
- Take short steps and walk at a slower pace to react quickly to changes in traction



## Preventing Falls When Removing Snow from Rooftops and Other Elevated Surfaces

OSHA's Hazard Alert, Snow Removal: Know the Hazards Pamphlet, and winter weather webpages provide guidance to employers on how to prevent serious injuries and fatalities. Employers should consider options to avoid working on roofs or elevated heights, plan ahead for safe snow removal and must:

- Provide required fall protection and training when working on the roof or elevated heights
- Ensure ladders are used safely (e.g. clearing snow and ice from surfaces)
- Use extreme caution when working near power lines
- Prevent harmful exposure to cold temperatures and physical exertion

## Advertise with the Carolinas Contacts Magazine

The CRSMCA Carolinas Contacts Magazine is published every other month, six-times a year, and is placed in over 800 roofing industry professional email inboxes throughout the Carolinas, Georgia, Virginia and more located in the southeast region. The CRSMCA Carolinas Contacts Magazine is also displayed on the CRSMCA website page with archived issues.

The magazine provides valuable information from products to services and regulations that are important to the roofing industry businesses as well as news and events within the roofing industry.

## MEMBER PRICING

Ad Size	6xs	3xs
Full Page	\$588	\$615
1/2 Page	\$345	\$360
1/3 Page	\$255	\$268
1/6 Page	\$199	\$210
Contactor Ad	\$165	-----

## NON-MEMBER PRICING

Ad Size	6xs	3xs
Full Page	\$588	\$615
1/2 Page	\$345	\$360
1/3 Page	\$255	\$268
1/6 Page	\$199	\$210

Submit full-color, high-resolution pdf artwork to  
**OR**

for additional information on placing your advertisement, contact Carla Sims at [cbsims@crsmca.org](mailto:cbsims@crsmca.org)

## AD SPECIFICATIONS

Size	Horizontal (width x height)	Vertical (width x height)
Full Page	7.5" x 10" (no bleed)	--
1/2 Page	7.5" x 4.625"	3.625" x 10"
1/3 Page	5" x 4.625"	2.375" x 10"
1/6 Page	3.625" x 4.625"	--
Contactor Ad	3.5" x 2"	--

Risk factors for cold stress include:

- Wetness/dampness, dressing improperly, and exhaustion
- Predisposing health conditions such as hypertension, hypothyroidism, and diabetes
- Poor physical conditioning

**What is cold stress?**

What constitutes cold stress and its effects can vary across different areas of the country. In regions that are not used to winter weather, near freezing temperatures are considered factors for "cold stress." Increased wind speed also causes heat to leave the body more rapidly (wind chill effect). Wetness or dampness, even from body sweat, also facilitates heat loss from the body. Cold stress occurs by driving down the skin temperature, and eventually the internal body temperature. When the body is unable to warm itself, serious cold-related illnesses and injuries may occur, and permanent tissue damage and death may result. Types of cold stress include: trench foot, frostbite, and hypothermia.

For more information, see OSHA's Cold Stress Safety and Health Guide.

**How can cold stress be prevented?**

Although OSHA does not have a specific standard that covers working in cold environments, under the Occupational Safety and Health Act (OSH Act) of 1970, employers have a duty to protect workers from recognized hazards, including cold stress hazards, that are causing or likely to cause death or serious physical harm in the workplace.

- Employers should train workers. Training should include:
  - How to recognize the environmental and workplace conditions that can lead to cold stress.
  - The symptoms of cold stress, how to prevent cold stress, and what to do to help those who are affected.
  - How to select proper clothing for cold, wet, and windy conditions.
- Employers should:
  - Monitor workers physical condition.
  - Schedule frequent short breaks in warm dry areas, to allow the body to warm up.
  - Schedule work during the warmest part of the day.
  - Use the buddy system (work in pairs).
  - Provide warm, sweet beverages. Avoid drinks with alcohol.
  - Provide engineering controls such as radiant heaters.

**Types of Cold Stress**

**Immersion/Trench Foot**

Trench foot is a non-freezing injury of the feet caused by prolonged exposure to wet and cold conditions. It can occur in temperatures as high as 60°F if feet are constantly wet. Injury occurs because wet feet lose heat 25-times faster than dry feet. [CDC/NIOSH]

*What are they symptoms of trench foot?*

Reddening skin, tingling, pain, swelling, leg cramps, numbness, and blisters.

First Aid

- Call 911 immediately in an emergency; otherwise seek medical assistance as soon as possible.
- Remove wet shoes/boots and wet socks.
- Dry the feet and avoid working on them.
- Keep affected feet elevated and avoid walking. Get medical attention.

# SAFRAN LAW OFFICES



## SERVING INDUSTRY FOR OVER 30 YEARS

**FIND US ON THE WEB:**



[www.safranlaw.com](http://www.safranlaw.com)

**SCHEDULE A LUNCH AND LEARN:**



[law@safranlaw.com](mailto:law@safranlaw.com)

**FOLLOW US ON TWITTER:**



[@safranlawBJS](https://twitter.com/safranlawBJS)

## **Frostbite**

Frostbite is caused by the freezing of the skin and tissues. Frostbite can cause permanent damage to the body, and in severe cases can lead to amputation. The risk of frostbite is increased in people with reduced blood circulation and among people who are not dressed properly for extremely cold temperatures.

*What are the symptoms of frostbite?*

Reddened skin develops gray/white patches in the fingers, toes, nose, or ear lobes; tingling, aching, a loss of feeling, firm/hard, and blisters may occur in the affected areas.

*First Aid*

- Follow the recommendations described below for hypothermia.
- Protect the frostbitten area, e.g., by wrapping loosely in a dry cloth and protect the area from contact until medical help arrives.
- DO NOT rub the affected area, because rubbing causes damage to the skin and tissue.
- Do not apply snow or water. Do not break blisters.
- DO NOT try to re-warm the frostbitten area before getting medical help, for example, do not use heating pads or place in warm water. If a frostbitten area is rewarmed and gets frozen again, more tissue damage will occur. It is safer for the frostbitten area to be rewarmed by medical professionals.
- Give warm sweetened drinks if alert (no alcohol).

## **Hypothermia**

Hypothermia occurs when the normal body temperature (98.6°F) drops to less than 95°F. Exposure to cold temperatures causes the body to lose heat faster than it can be produced. Prolonged exposure to cold will eventually use up the body's stored energy. The result is hypothermia, or abnormally low body temperature. Hypothermia is most likely at very cold temperatures, but it can occur even at cool temperatures (above 40°F) if a person becomes chilled from rain, sweat, or immersion in cold water.

*What are the symptoms of hypothermia?*

An important mild symptom of hypothermia is uncontrollable shivering, which should not be ignored. Although shivering indicates that the body is losing heat, it also helps the body to rewarm itself. Moderate to severe symptoms of hypothermia are loss of coordination, confusion, slurred speech, heart rate/breathing slow, unconsciousness and possibly death. Body temperature that is too low affects the brain, making the victim unable to think clearly or move well. This makes hypothermia particularly dangerous because a person may not know what is happening and won't be able to do anything about it.

*First Aid*

- Call 911 immediately in an emergency:
- Move the worker to a warm, dry area.
- Remove any wet clothing and replace with dry clothing. Wrap the entire body (including the head and neck) in layers of blankets; and with a vapor barrier (e.g. tarp, garbage bag) Do not cover the face.
- If medical help is more than 30 minutes away:
  - Give warm sweetened drinks if alert (no alcohol), to help increase the body temperature. Never try to give a drink to an unconscious person.
  - Place warm bottles or hot packs in armpits, sides of chest, and groin. Call 911 for additional rewarming instructions.

## **Basic Life Support (when necessary)**

Co-workers trained in cardiopulmonary resuscitation (CPR) may help a person suffering from hypothermia that has no pulse or is not breathing:

- Call 911 for emergency medical assistance immediately.
- Treat the worker as per instructions for hypothermia, but be very careful and do not try to give an unconscious person fluids.
- Check him/her for signs of breathing and for a pulse. Check for 60 seconds.
- If after 60 seconds the affected worker is not breathing and does not have a pulse, trained workers may start rescue breaths for 3 minutes.
- Recheck for breathing and pulse, check for 60 seconds.
- If the worker is still not breathing and has no pulse, continue rescue breathing.
- Only start chest compressions per the direction of the 911 operator or emergency medical services\*
- Reassess patient's physical status periodically.

\*Chest compression are recommended only if the patient will not receive medical care within 3 hours.

## **Wind Chill Temperature: A Guide for Employers**

Outdoor workers exposed to cold and windy conditions are at risk of cold stress, both air temperature and wind speed affect how cold they feel. Wind Chill is the term used to describe the rate of heat loss from the human body, resulting from the combined effect of low air temperature, and wind speed. The Wind Chill Temperature is a single value that takes both air temperature, and wind speed into account. For example, when the air temperature is 40°F, and the wind speed is 35mph, the wind chill temperature is 28°F; this measurement is the actual effect of the environmental cold on the exposed skin.

National Weather Service (NWS) Wind Chill Calculator: With this tool, one may input the air temperature and wind speed, and it will calculate the wind chill temperature.

The American Conference of Governmental Industrial Hygienists (ACGIH) developed the following Work/Warm-up Schedule for a 4-hour shift takes both air temperature and wind speed into account, to provide recommendations on scheduling work breaks and ceasing non-emergency work.

*Provided by United States Department of Labor/OSHA*

[www.osha.gov/winter-weather/cold-stress](http://www.osha.gov/winter-weather/cold-stress)

# SAFETY TALKS



## Hazard Communication in the Roofing and Sheet Metal Industries

Each year, OSHA releases its list of top violations to help focus attention what they perceive to be the most pressing deficiencies in occupational safety. While roofing contractors might typically pay more attention to fall protection and sheet metal contractors might pay more attention to machine guarding, it is important to keep in mind that violations of OSHA's Hazard Communication standard consistently rank high on OSHA's most frequent violations.

In short, OSHA's Hazard Communication standard requires employers to provide information to their employees about the hazardous chemicals to which they are exposed at work. OSHA requires that this be done through a written hazard communication program, hazardous chemical labels, safety data sheets, and training.

According to OSHA, a hazardous chemical is any chemical that can cause a physical or health hazard. Chemicals that are cancer-causing, cause irritation or chemical burns if they contact the skin, are poisonous if swallowed, or cause severe damage if splashed in the eyes are all examples of chemicals that have health hazards associated with them. Chemicals that are flammable, explosive, and gases under pressure.

In the roofing industry, synthetic roofing materials, asphalt roof shingles, and adhesives all contain hazardous chemicals. In addition, items roofers use every day, like lubricants, hand-cleaning products, sealants, thinners, coatings, gasoline and diesel fuels, and even fire extinguishers are considered to be hazardous chemicals according to OSHA's Hazard Communication standard. Similarly, in the sheet metal industry, lubricants, coolants, corrosion inhibitors, cleaners, coatings, fluxes, and other chemicals all are used and are considered to be hazardous chemicals according to OSHA's Hazard Communication standard.

In the next three Safety Talks, we will discuss some of the cornerstones of OSHA's Hazard Communication standard, and what all employees of roofing and sheet metal contractors should know. Specifically, we will discuss safety data sheets, hazardous chemical labels, and hazard pictograms. Armed with this information, you will know how to find the hazards associated with the chemicals that you use at work and how to protect yourself when using them.

### DISCUSS WITH YOUR CREW

Name as many chemicals as you can that we are using or will likely use on this job that has a health hazard associated with them.  
Name as many chemicals as you can that we are using or will likely use on this job that has a physical hazard associated with them.  
Although we will discuss these things in the next few weeks, I have a few questions for you to test your knowledge about OSHA Hazard Communication standard.

- Where can you find information about the hazards of a chemical you are using at work? (possible correct answers: hazard label, safety data sheet, or ask your supervisor)
- Where can you find information about the proper personal protective equipment to use when working with a chemical you are using at work? (possible correct answers: hazard label, safety data sheet, or ask your supervisor)

How many of you know what safety data sheets (SDS) are and where to find them?

### SAFETY TALK ATTENDEES:

---

---

---

---

---

---

# CHARLAS DE SEGURIDAD



## Comunicación de peligros en las industrias de techado y chapa

Cada año, OSHA publica su lista de las principales infracciones para ayudar a centrar la atención en lo que perciben como las deficiencias más apremiantes en la seguridad laboral. Si bien los contratistas de techado suelen prestar más atención a la protección contra caídas y los contratistas de láminas de metal pueden prestar más atención a la protección de las máquinas, es importante tener en cuenta que las infracciones de la norma de comunicación de riesgos de la OSHA ocupan un lugar destacado entre las infracciones más frecuentes de la OSHA.

En resumen, la norma de comunicación de riesgos de OSHA requiere que los empleadores proporcionen información a sus empleados sobre los productos químicos peligrosos a los que están expuestos en el trabajo. OSHA requiere que esto se haga a través de un programa escrito de comunicación de peligros, etiquetas de productos químicos peligrosos, hojas de datos de seguridad y capacitación.

Según OSHA, un químico peligroso es cualquier químico que puede causar un peligro físico o para la salud. Los productos químicos que causan cáncer, que causan irritación o quemaduras químicas si entran en contacto con la piel, que son venenosos si se ingieren o que causan daños graves si se salpican en los ojos son ejemplos de productos químicos que conllevan riesgos para la salud. Sustancias químicas inflamables, explosivas y gases a presión.

En la industria de los techos, los materiales sintéticos para techos, las tejas de asfalto para techos y los adhesivos contienen productos químicos peligrosos. Además, los artículos que los techadores usan todos los días, como lubricantes, productos para la limpieza de manos, selladores, diluyentes, revestimientos, combustibles de gasolina y diésel, e incluso los extintores de incendios, se consideran sustancias químicas peligrosas según el estándar de comunicación de peligros de OSHA. De manera similar, en la industria del metal laminado, se utilizan lubricantes, refrigerantes, inhibidores de corrosión, limpiadores, revestimientos, fundentes y otros productos químicos, y se consideran productos químicos peligrosos de acuerdo con la norma de comunicación de peligros de OSHA.

En las próximas tres charlas de seguridad, analizaremos algunos de los pilares de la norma de comunicación de riesgos de OSHA y lo que todos los empleados de los contratistas de techado y chapa metálica deben saber. Específicamente, discutiremos las hojas de datos de seguridad, las etiquetas de productos químicos peligrosos y los pictogramas de peligro. Armado con esta información, sabrá cómo encontrar los peligros asociados con los productos químicos que usa en el trabajo y cómo protegerse cuando los use.

## DISCUTA CON SU EQUIPO

Nombre tantos productos químicos como pueda que estamos usando o probablemente usaremos en este trabajo que tienen un riesgo para la salud asociado con ellos.

Nombre tantos productos químicos como pueda que estamos usando o probablemente usaremos en este trabajo que tienen un peligro físico asociado con ellos.

Aunque hablaremos de estos temas en las próximas semanas, tengo algunas preguntas para que pruebe su conocimiento sobre el estándar de comunicación de peligros de OSHA.

- ¿Dónde puede encontrar información sobre los peligros de un químico que está usando en el trabajo? (respuestas correctas posibles: etiqueta de peligro, hoja de datos de seguridad o pregunte a su supervisor)
- ¿Dónde puede encontrar información sobre el equipo de protección personal adecuado para usar al trabajar con un producto químico que está usando en el trabajo? (respuestas correctas posibles: etiqueta de peligro, hoja de datos de seguridad o pregunte a su supervisor)

¿Cuántos de vosotros sabéis qué son las fichas de datos de seguridad (SDS) y dónde encontrarlas?

## ASISTENTES DE LA CHARLA DE SEGURIDAD:

---

---

---

---

---

---

---

---